

Product Features and Specifications

FA150KGi Infinity Series Winch - Capacity: 330 lbs (150 kg)

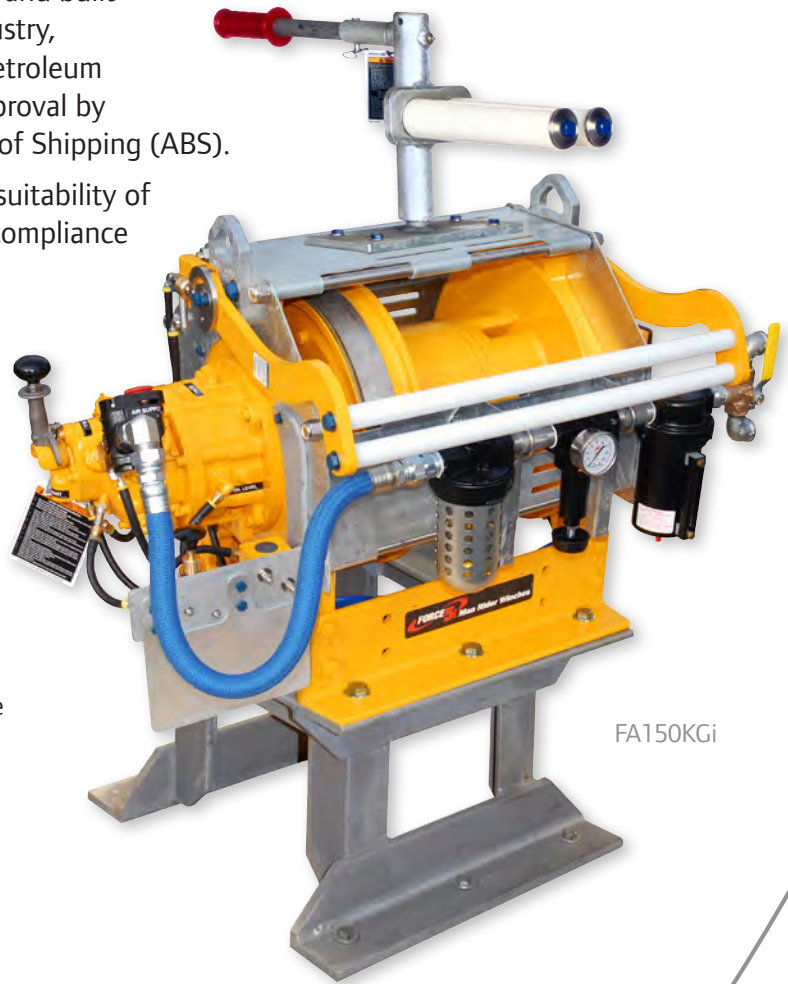
PFS-FA150-09072010

FA150KGi Man Rider™ winches have been designed and built to meet the requirements of the Oil Exploration Industry, particularly those specifications of the Norwegian Petroleum Directorate and the DNV. They have design Type Approval by Det Norske Veritas (DNV) and the American Bureau of Shipping (ABS).

It remains the user's responsibility to determine the suitability of this product for any particular use and to check for compliance with applicable regulations.

Standard Features

- Upper and lower limit switches
- Slack rope detector
- Press roller
- Emergency stop button
- Overload device
- Emergency lowering capability
- Automatic drum brake
- Enclosed automatic oil bath "wet" disc brake is fully sealed against salt spray, dirt or moisture and provides trouble-free operation over thousands of lifting cycles
- Internal gearbox / disc brake combination provides superior load control
- Corrosion resistant drum guard
- CE Compliance
- Muffler
- 10:1 design factor
- Compact frame and fabricated alloy steel drum fit into tight spaces.
- Standard design temperature range is 0°C through 60°C; optional design temperature of -20°C
- Minimum 18:1 drum diameter to wire rope diameter ratio reduces wire rope wear
- Data book and "Type Approval" certificates available upon request
- Marine 812 finish paint "P" standard on FA150KGi models
- Pre-certified lifting lugs
- Filter, regulator, lubricator



FA150KGi

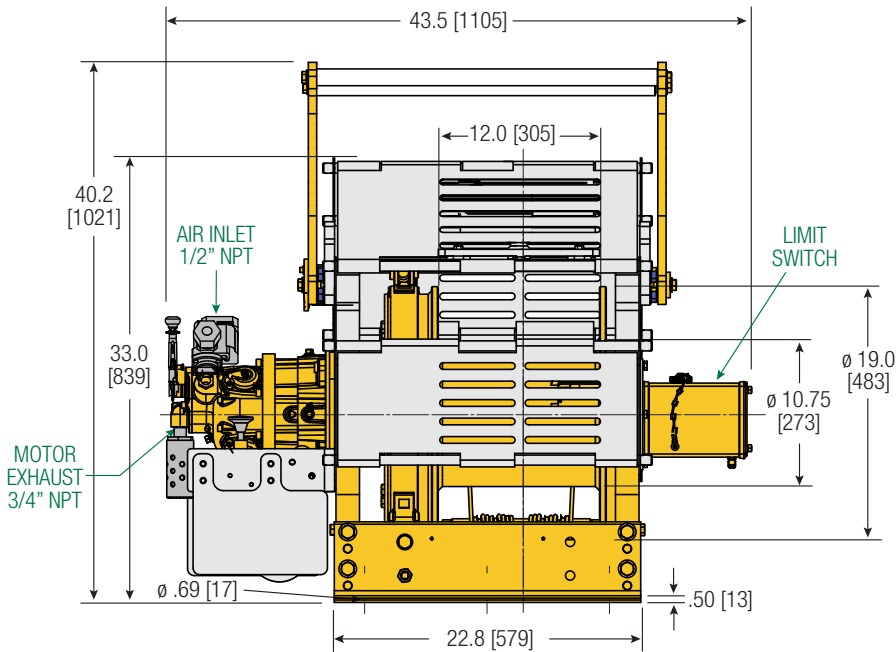
Options

- Emergency lowering system
- Pedestal base
- Manual rope guide
- Stainless steel hose package

Product Features and Specifications

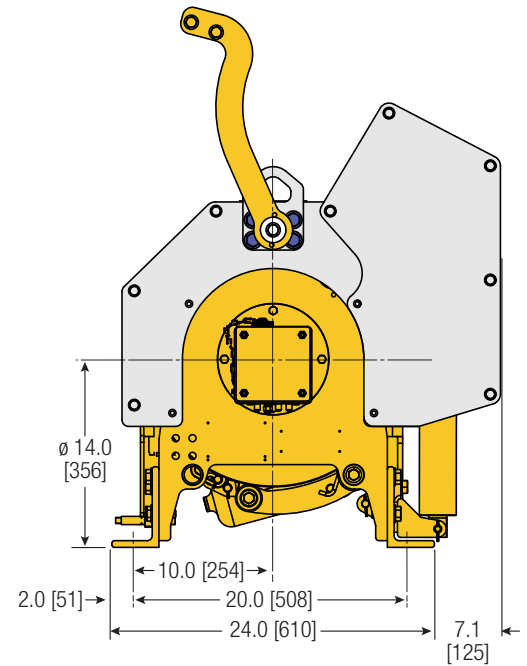
FA150KGi Infinity Series Winch - Capacity: 330 lbs (150 kg)

PFS-FA150-09072010



FA150KGi

Dimensions shown are inches.
Dimensions in Brackets [] are mm.

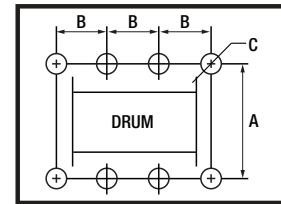


Dimensions are subject to change.
Contact factory for certified drawings.

Dimensions: FA150KGi-MR and Bolt Down Pattern

Drum Length 12" [305 mm]		
Both Brakes		
	in	mm
Overall Length	43.6	1107
'A'	20	508
'B'	9.00	229
'C'	0.69	18
Total # Holes	6	

Bolt Down Pattern



'C' = Bolt Hole Inside Diameter

Man Rider™ Lift Ratings at 10:1 Design Factor (Performance at 6.3 Bar - 90 PSI at air inlet when winch is operating)

Model #	Top Layer					First Layer				Average Air Consumption ⁽¹⁾	Sound Level ⁽²⁾	Inlet Size	Exhaust Size	Net Weight		
	hp	lbs	kg	ft/min	m/min	Rated Capacity	Stall Pull	ft/min	m/min					lbs	kg	
FA150KGi-MR12-1-E	2	330	150	89	27	82	25	622	283	50	14	89	1/2"	3/4"	750	340

(1) Average Air Consumption is at rated load and speed at top layer (2) With optional muffler

Drum Wire Rope Storage Capacity - Imperial - Man Rider™

Series	Rated capacity lbs	Rope Diameter in	Min Req Break Strength* lbs	Accumulated rope capacity in feet / number of layers													
				1	2	3	4	5	6	7	8	9	10	11	12	13	14
FA150KGi-12	330	3/8	3,300	90	186	288	396	509	628	753	884	1,021	1,163	1,311			

Drum Wire Rope Storage Capacity - Metric - Man Rider™

Series	Rated capacity kg	Rope Diameter mm	Min Req Break Strength* kg	Accumulated rope capacity in meters / number of layers													
				1	2	3	4	5	6	7	8	9	10	11	12	13	14
FA150KGi-12	150	10	1497	26	54	84	115	148	183	220	259	299	341	385			

* **Note:** The Minimum Required Breaking Strength for the wire rope needs to be the Rated Capacity multiplied by the Design Factor.

Example: for the FA150KGi-12 (with a 10:1 Design Factor) 330 x 10 = 3,300 lbs.